

Scales for Orchestra

Bass

One Octave Scales and Arpeggios

Arr. Somerville

C Major

Musical notation for C Major scale in bass clef, 4/4 time. The scale is written in two measures: an ascending scale and a descending scale. The ascending scale has fingerings 2, 4, 1. The descending scale has fingerings 4, 1.

G Major

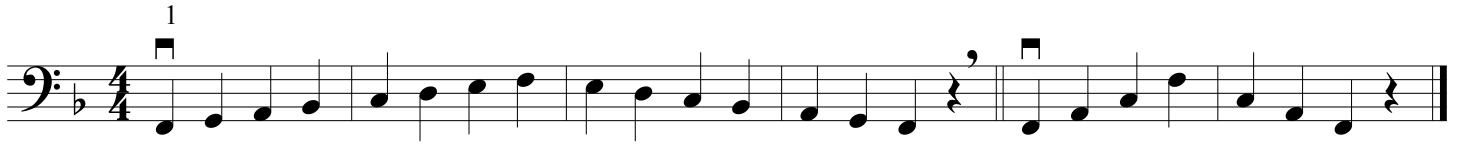
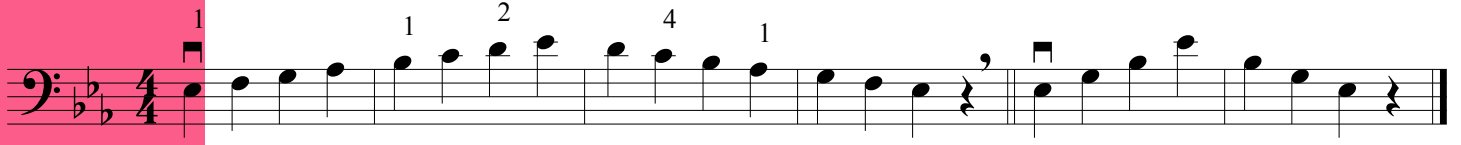
Musical notation for G Major scale in bass clef, 4/4 time. The scale is written in two measures: an ascending scale and a descending scale.

D Major

Musical notation for D Major scale in bass clef, 4/4 time. The scale is written in two measures: an ascending scale and a descending scale. The ascending scale has fingerings 2, 4, 4. The descending scale has fingerings 4, 1.

A Major

Musical notation for A Major scale in bass clef, 4/4 time. The scale is written in two measures: an ascending scale and a descending scale. The ascending scale has fingerings 1, 2, 4.

F Major**B \flat Major****E \flat Major****G Melodic Minor****Chromatic (lowest open string)**