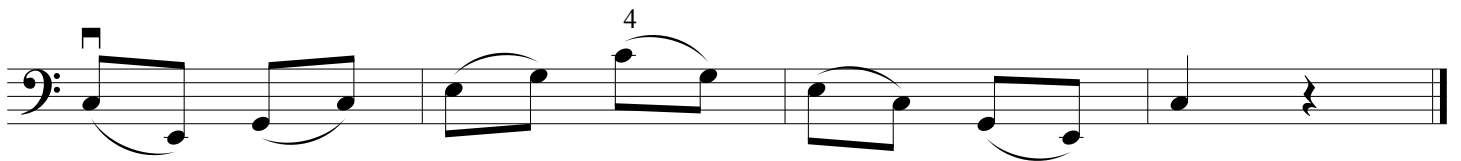
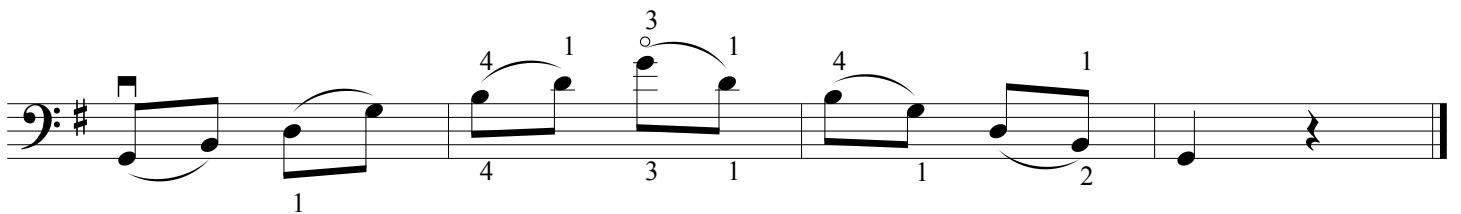
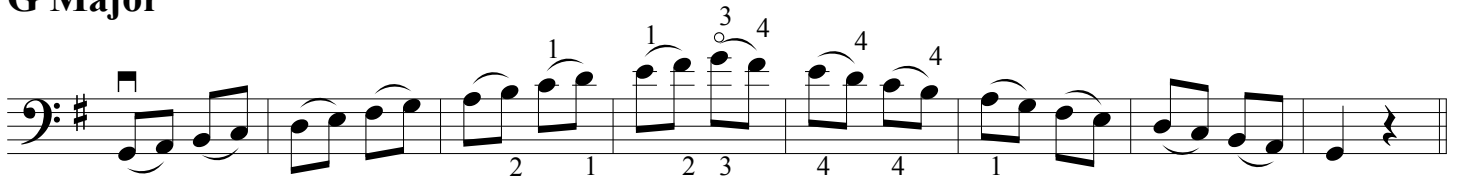
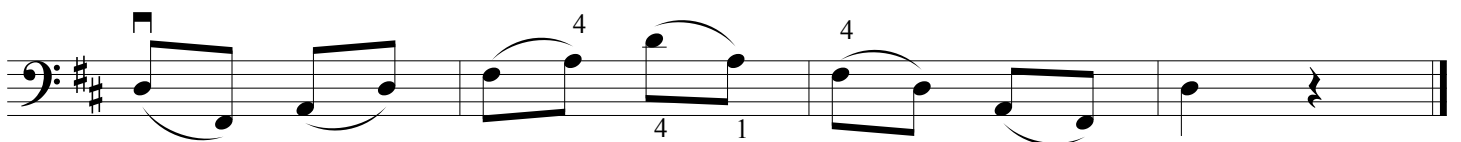
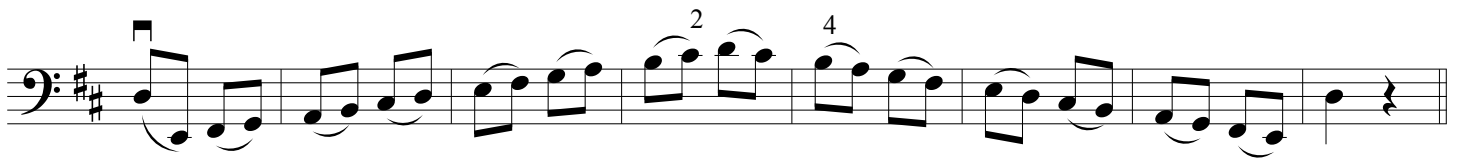


Two Octave Major Scales and Arpeggios

C Major**G Major****D Major**

A Major

Ascending scale: A2, B2, C3, D3, E3, F#3, G#3, A3. Fingering: 1, 1, 1, 1, 4, 4, 2, 4.

Descending scale: A3, G#3, F#3, E3, D3, C3, B2, A2.

F Major

Ascending scale: F2, G2, A2, Bb2, C3, D3, E3, F3. Fingering: 1, 2, 4, 4.

Descending scale: F3, E3, D3, C3, Bb2, A2, G2, F2. Fingering: 4, 1, 4.

Bb Major

Ascending scale: Bb2, C3, D3, E3, F3, G3, Ab3, Bb3.

Descending scale: Bb3, Ab3, G3, F3, E3, D3, C3, Bb2.

Eb Major

Ascending scale: Eb2, F2, G2, Ab2, Bb2, C3, D3, Eb3. Fingering: 2, 1, 1, 2, 4, 4, 1, 4, 1.

Descending scale: Eb3, D3, C3, Bb2, Ab2, G2, F2, Eb2. Fingering: 4, 1.

Two Octave Melodic Minor Scales and Minor Arpeggios

A Melodic Minor

Ascending: A2, B2, C#3, D3 (1), E3, F#3, G#3, A3 (1), B3, C4, D4, E4, F#4, G#4, A4 (1).
Descending: A4, G#4, F#4, E4, D4, C4, B3, A3, G3, F3, E3, D3, C#3, B2, A2.

Ascending: A2, B2, C#3, D3, E3, F#3, G#3, A3.
Descending: A3, G#3, F#3, E3, D3, C4, B3, A3.

E Melodic Minor

Ascending: E2, F#2, G#2, A2 (1), B2 (1), C#3, D3 (1), E3 (2), F#3, G#3, A3, B3, C#4, D4, E4.
Descending: E4, D4, C#4, B3, A3, G#3, F#3, E3, D3, C#3, B2, A2, G#2, F#2, E2.

Ascending: E2, F#2, G#2, A2 (0), B2 (4), C#3, D3 (4), E3 (1), F#3, G#3, A3, B3, C#4, D4, E4 (1).
Descending: E4, D4, C#4, B3, A3, G#3, F#3, E3, D3, C#3, B2, A2, G#2, F#2, E2 (1).

D Melodic Minor

Ascending: D2, E2, F#2, G#2 (1), A2 (1), B2, C#3, D3 (2), E3 (2), F#3, G#3, A3, B3, C#4, D4 (4).
Descending: D4, C#4, B3, A3, G#3, F#3, E3, D3, C#3, B2, A2, G#2, F#2, E2, D2.

Ascending: D2, E2, F#2, G#2 (1), A2 (1), B2, C#3, D3 (2), E3 (2), F#3, G#3, A3, B3, C#4, D4 (1).
Descending: D4, C#4, B3, A3, G#3, F#3, E3, D3, C#3, B2, A2, G#2, F#2, E2, D2 (1).

