

Two Octave Major Scales and Arpeggios

C Major

Ascending: C4 (quarter), D4 (quarter), E4 (quarter), F4 (quarter), G4 (quarter), A4 (quarter), B4 (quarter), C5 (quarter), B4 (quarter), A4 (quarter), G4 (quarter), F4 (quarter), E4 (quarter), D4 (quarter), C4 (quarter).
Descending: C5 (quarter), B4 (quarter), A4 (quarter), G4 (quarter), F4 (quarter), E4 (quarter), D4 (quarter), C4 (quarter), B3 (quarter), A3 (quarter), G3 (quarter), F3 (quarter), E3 (quarter), D3 (quarter), C3 (quarter).

Ascending: C4 (quarter), E4 (quarter), G4 (quarter), C5 (quarter), B4 (quarter), A4 (quarter), G4 (quarter), F4 (quarter), E4 (quarter), C4 (quarter).
Descending: C5 (quarter), B4 (quarter), A4 (quarter), G4 (quarter), F4 (quarter), E4 (quarter), C4 (quarter), B3 (quarter), A3 (quarter), G3 (quarter), F3 (quarter), E3 (quarter), C3 (quarter).

G Major

Ascending: G4 (quarter), A4 (quarter), B4 (quarter), C5 (quarter), D5 (quarter), E5 (quarter), F5 (quarter), G5 (quarter), F5 (quarter), E5 (quarter), D5 (quarter), C5 (quarter), B4 (quarter), A4 (quarter), G4 (quarter).
Descending: G5 (quarter), F5 (quarter), E5 (quarter), D5 (quarter), C5 (quarter), B4 (quarter), A4 (quarter), G4 (quarter), F4 (quarter), E4 (quarter), D4 (quarter), C4 (quarter), B3 (quarter), A3 (quarter), G3 (quarter).
Fingering: 1, 1, 2, 1, 2.

Ascending: G4 (quarter), B4 (quarter), D5 (quarter), G5 (quarter), F5 (quarter), E5 (quarter), D5 (quarter), C5 (quarter), B4 (quarter), G4 (quarter).
Descending: G5 (quarter), F5 (quarter), E5 (quarter), D5 (quarter), C5 (quarter), B4 (quarter), G4 (quarter), F4 (quarter), E4 (quarter), D4 (quarter), C4 (quarter), B3 (quarter), G3 (quarter).
Fingering: 1, 1, 2.

D Major

Ascending: D4 (quarter), E4 (quarter), F#4 (quarter), G4 (quarter), A4 (quarter), B4 (quarter), C#5 (quarter), D5 (quarter), C#5 (quarter), B4 (quarter), A4 (quarter), G4 (quarter), F#4 (quarter), E4 (quarter), D4 (quarter).
Descending: D5 (quarter), C#5 (quarter), B4 (quarter), A4 (quarter), G4 (quarter), F#4 (quarter), E4 (quarter), D4 (quarter), C#4 (quarter), B3 (quarter), A3 (quarter), G3 (quarter), F#3 (quarter), E3 (quarter), D3 (quarter).

Ascending: D4 (quarter), F#4 (quarter), A4 (quarter), D5 (quarter), C#5 (quarter), B4 (quarter), A4 (quarter), G4 (quarter), F#4 (quarter), D4 (quarter).
Descending: D5 (quarter), C#5 (quarter), B4 (quarter), A4 (quarter), G4 (quarter), F#4 (quarter), D4 (quarter), C#4 (quarter), B3 (quarter), A3 (quarter), G3 (quarter), F#3 (quarter), D3 (quarter).

A Major

Two staves of musical notation for the A Major scale. The first staff shows the ascending and descending scales in treble clef, with fingerings 1, 3, and 1 indicated. The second staff shows the ascending and descending scales in bass clef, with fingerings 1 and 1 indicated.

F Major

Two staves of musical notation for the F Major scale. The first staff shows the ascending and descending scales in treble clef, with fingerings 1, 1, 2, and 2 indicated. The second staff shows the ascending and descending scales in bass clef, with fingerings 3, 2, and 2 indicated.

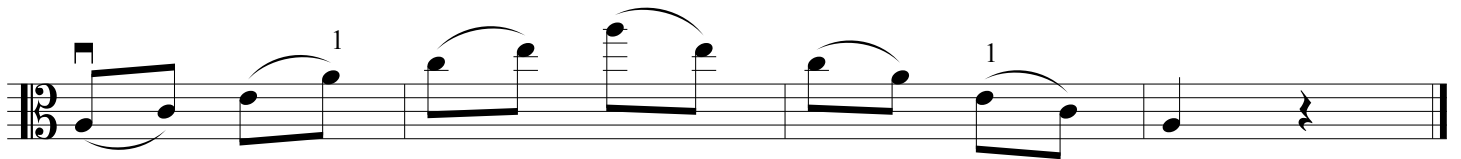
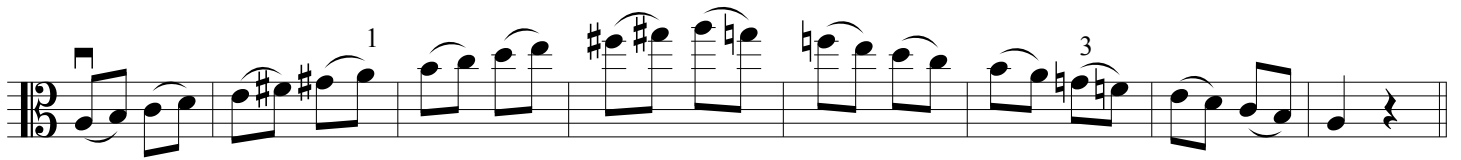
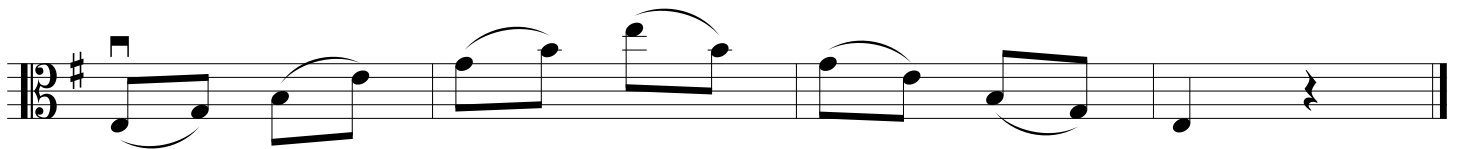
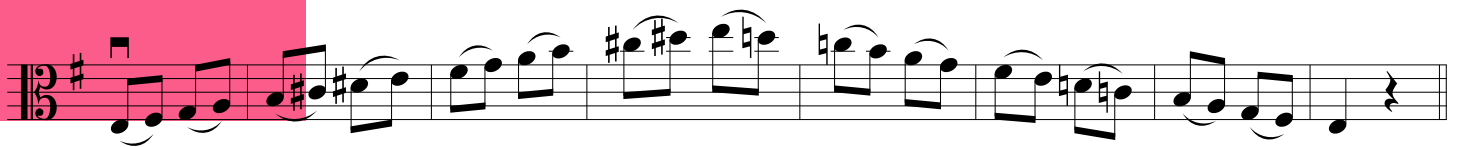
B \flat Major

Two staves of musical notation for the B-flat Major scale. The first staff shows the ascending and descending scales in treble clef, with fingerings 1, 1, 2, and 2 indicated. The second staff shows the ascending and descending scales in bass clef, with fingerings 1, 3, and 3 indicated.

E \flat Major

Two staves of musical notation for the E-flat Major scale. The first staff shows the ascending and descending scales in treble clef. The second staff shows the ascending and descending scales in bass clef.

Two Octave Melodic Minor Scales and Minor Arpeggios

A Melodic Minor**E Melodic Minor****D Melodic Minor**